

R540 / R545

Laser Receiver with dual axis PSD technology,
Bluetooth communication and an exchangeable
Li-Ion Powerpack

NEW!

Exchangeable Li-Ion
Powerpack!



Over 8 hours of
measurement time!



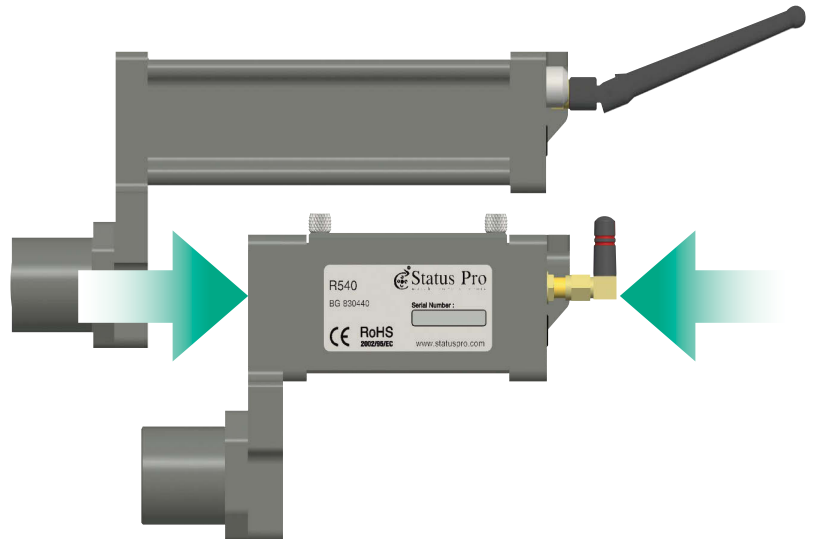
The new **R540** and **R545** Series:

SMALLER, MORE POWER, IMPROVED ACCURACY ... BETTER!!!

SMALLER

The new sensors are 56 mm shorter than their predecessors! That's a saving of 25 %. The sensors now measure 49 mm (R545), and 166 mm (R540)!

The reduction in size leads also to a reduction in weight: The R545 now weighs in at 502 g, and the R540 weighs 452 g!



MORE POWER

The mass-produced Li-Ion power pack is now exchangeable at will, enabling non-stop measurement. To facilitate this, you need a second power pack, and after a recharging time of just one hour, the R540 or R545 is ready for usage of a further 8 hours or more!



MORE ACCURATE

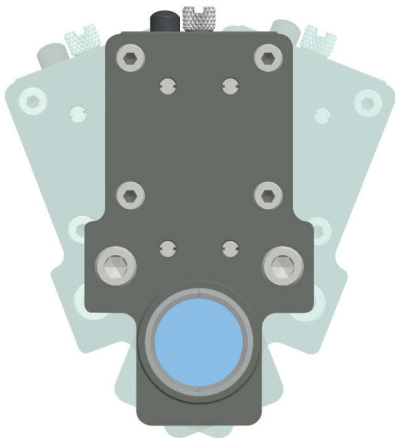
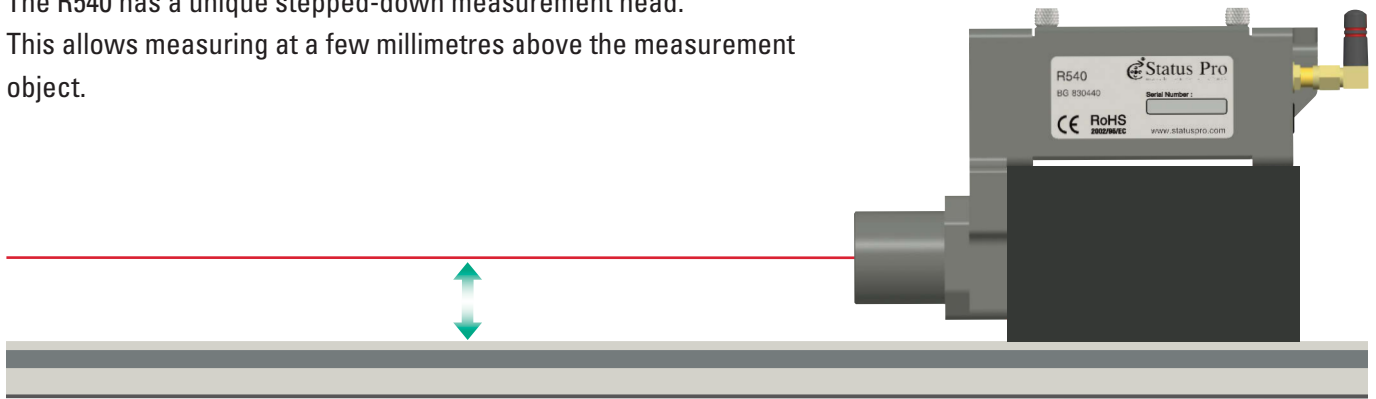
The internal electronics have been completely re-designed and re-built. In this way, changes and improvements, as well as State of the Art electronics were able to be implemented. The result: better communication, improved stability and ultimately, more reliability!

Up to present, and continuing:

- Highest of accuracy: Measurement down to a single micron!
- Integrated Bluetooth: Cable-free transmission of data to the display unit with a range of around 50 metres.
- Inclinator (R545) with a resolution of 0,1°
- Integrated shutters for coarse alignment (R545) – no separate covers or shutters!

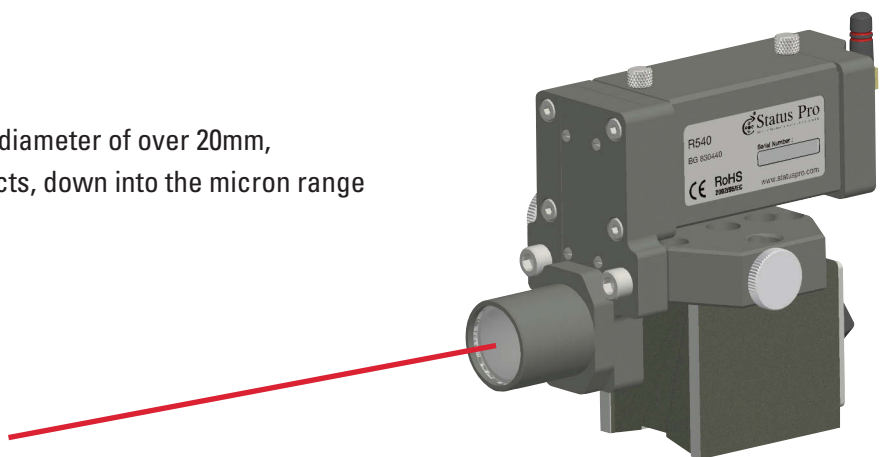
Laser Receiver R540 - The “Straightness specialist“

The R540 has a unique stepped-down measurement head.
This allows measuring at a few millimetres above the measurement
object.



The advantage is that when measuring on slightly uneven surfaces, measuring inaccuracies are reduced to a minimum: The main housing of the sensor may tilt, but the measurement head remains in position!

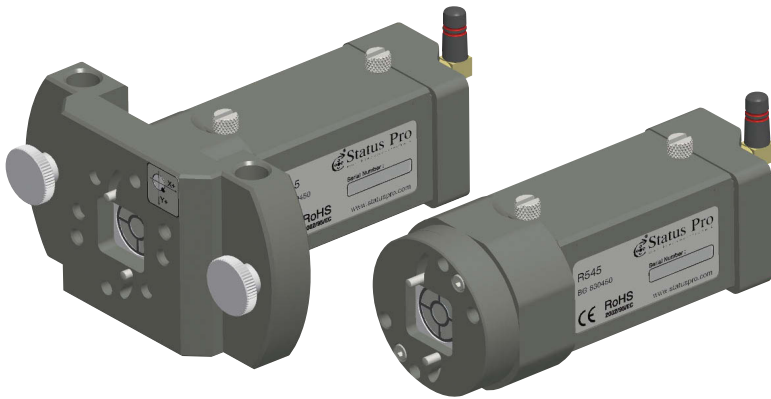
The front lens facilitates a measurement diameter of over 20mm,
enabling the measurement of larger objects, down into the micron range
when needed.



Conclusion:

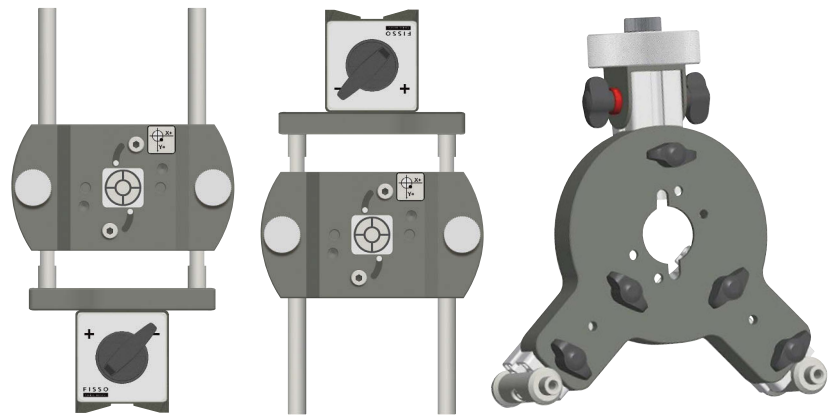
The ideal partner when measuring linear guides and similar objects!

Laserreceiver R545 - A real Allrounder



When you need to measure geometrical tasks, the R545 is a "hands down winner". Thanks to the symmetrical design of the housing, the R545 can be used for the most diverse of tasks! From linear guides, straightness of bore-ways, up to parallelism of printing-machine rolls or similar machines.

The R545 can be used with a wide range of ready-made attachments as well as being flexible enough to be able to be mounted on specialized or "home-made" attachments.



With its 20 x 20 mm 2-Axis PSD-Sensor the R545 is capable of measuring even when the laser beam meets the sensor at an angle, sometimes unavoidable in the field.

Result:

A versatile Laser Receiver, good for "putting things straight".



Introductory offer:

Don't waste time, exchange your old R510/R525 against the new R540/R545! Ask for an Upgrade Offer today!

For more information please contact us.



Status Pro Maschinenmesstechnik GmbH
Mausegatt 19 · D-44866 Bochum
Telefon: + 49 (0) 2327 - 9881 - 0
Fax: + 49 (0) 2327 - 9881 - 81
www.statuspro.com · info@statuspro.com

Distributor